

# The Stages of Learning

are not linear like a staircase.

**GENERALIZATION**

**MAINTENANCE**

**ACQUISITION**



# The Stages of Learning

are more of a spectrum.



ACQUISITION

MAINTENANCE

GENERALIZATION

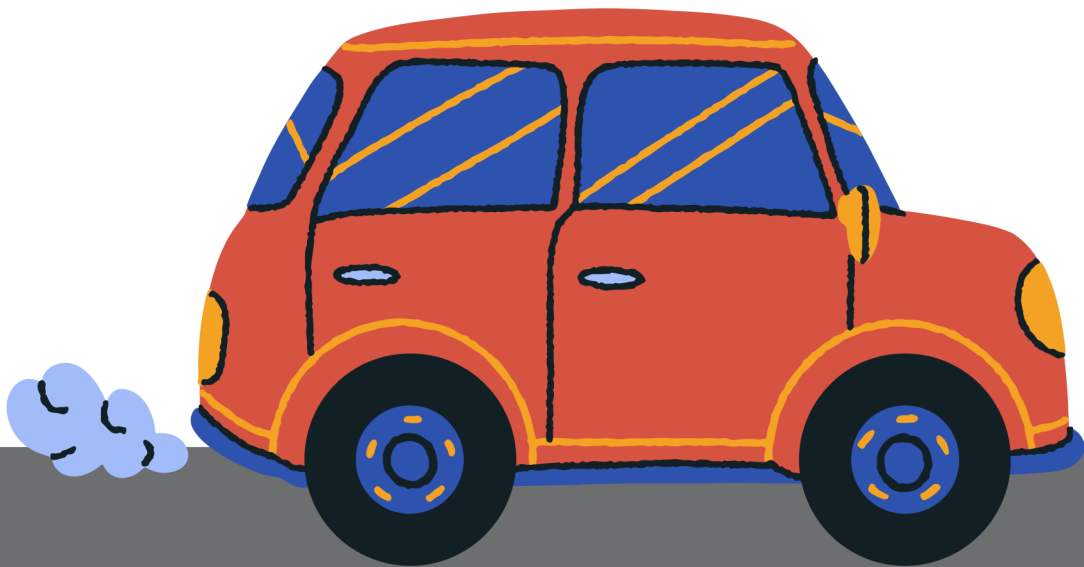
As kids learn new skills, they may move in and out of these stages, especially when we add to the skill.

# Think about when you are learning to drive

**Acquisition** - Starting drivers ed and getting behind the wheel for the first time.

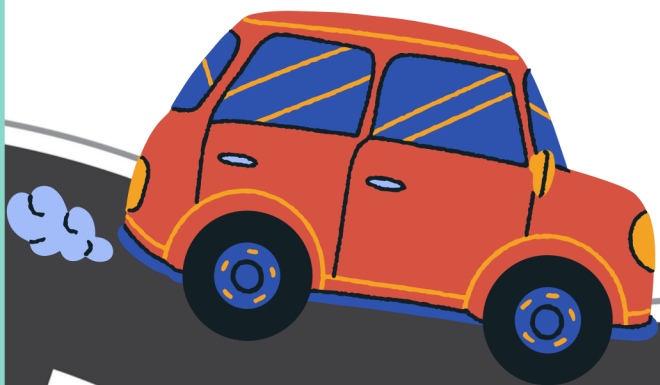
**Maintenance** - Learners permit era. You still need guidance and coaching to improve your skills.

**Generalization** - You have your license and you are cruising down the streets!



# **Now think about when driving in a new area or terrain**

Even the most experienced drivers, may go back into maintenance or even acquisition. The skill of driving did not change, but a modification to the conditions makes it more challenging.



# THE LISTENING SLP



## **ABOUT SYDNEY BASSARD, MSP, CCC-SLP**

Sydney created The Listening SLP in 2019 as a platform to share information freely with families, caregivers, and professionals. Since that time, her platform has gained over 19K followers and supports. Her mission is dedicated to listening, learning, and advocating with families. We are so happy to have you here!